



## Covid-19 vaccination: Briefing for stakeholders

Covid-19 cases in Bath and North East Somerset, Swindon and Wiltshire are on the rise and, in order to keep our communities safe, we need as many people to come forward for their required vaccinations.

People eligible for a booster vaccine, which includes all those over the age of 50, will be contacted, either by a letter or a text from the NHS or their local GP practice, as soon as it has been six months since the date of their last Covid-19 vaccination.

It's massively important that those in line for a booster have their top-up dose as quickly as possible once they have been contacted, as we know these are the people who are most at risk of becoming seriously ill with Covid-19.

Booster vaccine appointments are available at vaccination centres across our region, with some patients having their appointments booked by their local GP practice and others being instructed to use the [National Booking Service](#), which shows appointment availability at our larger venues, such as the Steam Museum in Swindon, Bath Racecourse and Salisbury City Hall.

**Gill May,**  
Director of Nursing and Quality

### Updates



#### Vaccines for children aged between 12 and 15-years-old

Almost 4,000 vaccines have so far been given out in schools across BSW to children aged between 12 and 15-years-old.

While Virgin Care's immunisation service team will resume their school visits after the half term break, parents can, in the interim, arrange to have their child vaccinated at one of a number of vaccination centres located across the region, with appointments soon to be available through the [National Booking Service](#).

## Protecting vulnerable care home residents across BSW

The majority of care homes in Bath and North East Somerset, Swindon and Wiltshire now have a date in the diary for when their residents will receive a Covid-19 booster vaccination.

We are working hard to arrange clinic dates with those not yet on the list, and we are also arranging dedicated visits to any care home whose usual GP practice is not participating in the booster programme.



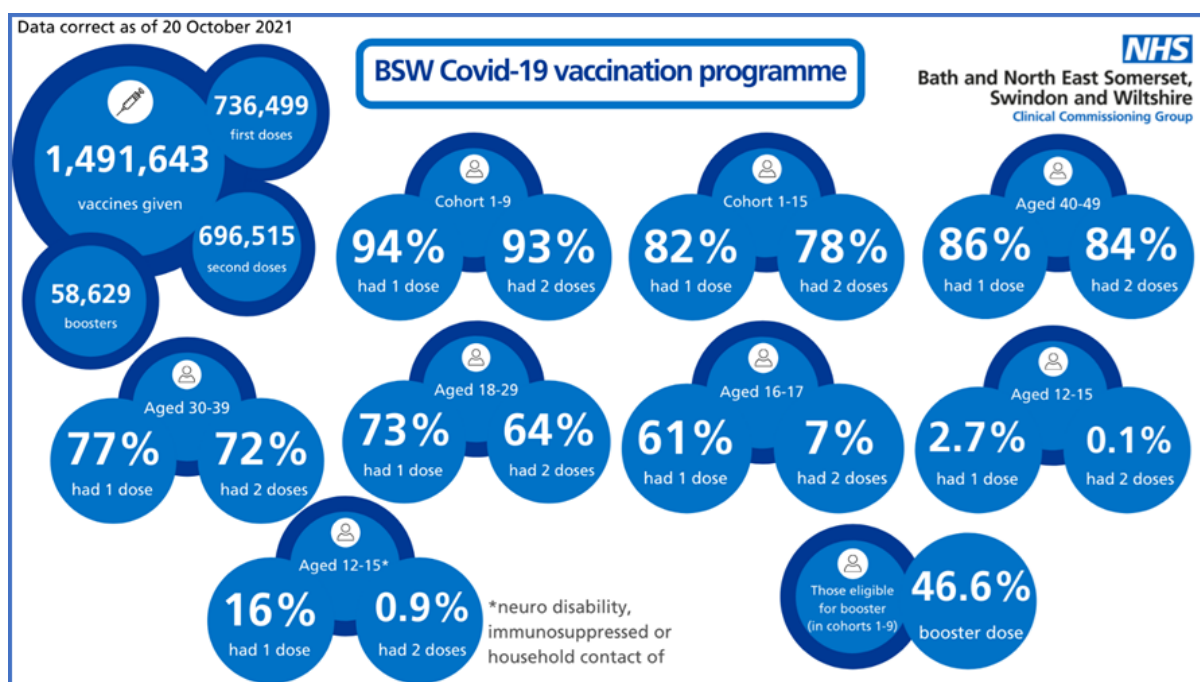
## Taking the vaccine to those who need it

The CCG's outreach team is currently travelling across BSW to deliver the Covid-19 booster vaccine to people who would otherwise struggle to make it to a formal vaccination centre.

This includes visiting homeless shelters and traveller sites, as well as arranging vaccination clinics with those who are part of a boater community.

More outreach clinics will be planned over the coming weeks, with community venues being favoured instead of the mobile vaccination clinic due to the cold weather.

## Vaccination progress to date



**The BSW Covid-19 vaccination programme is being led by BSW CCG with support from partner organisations including voluntary community and social enterprises.**

---

